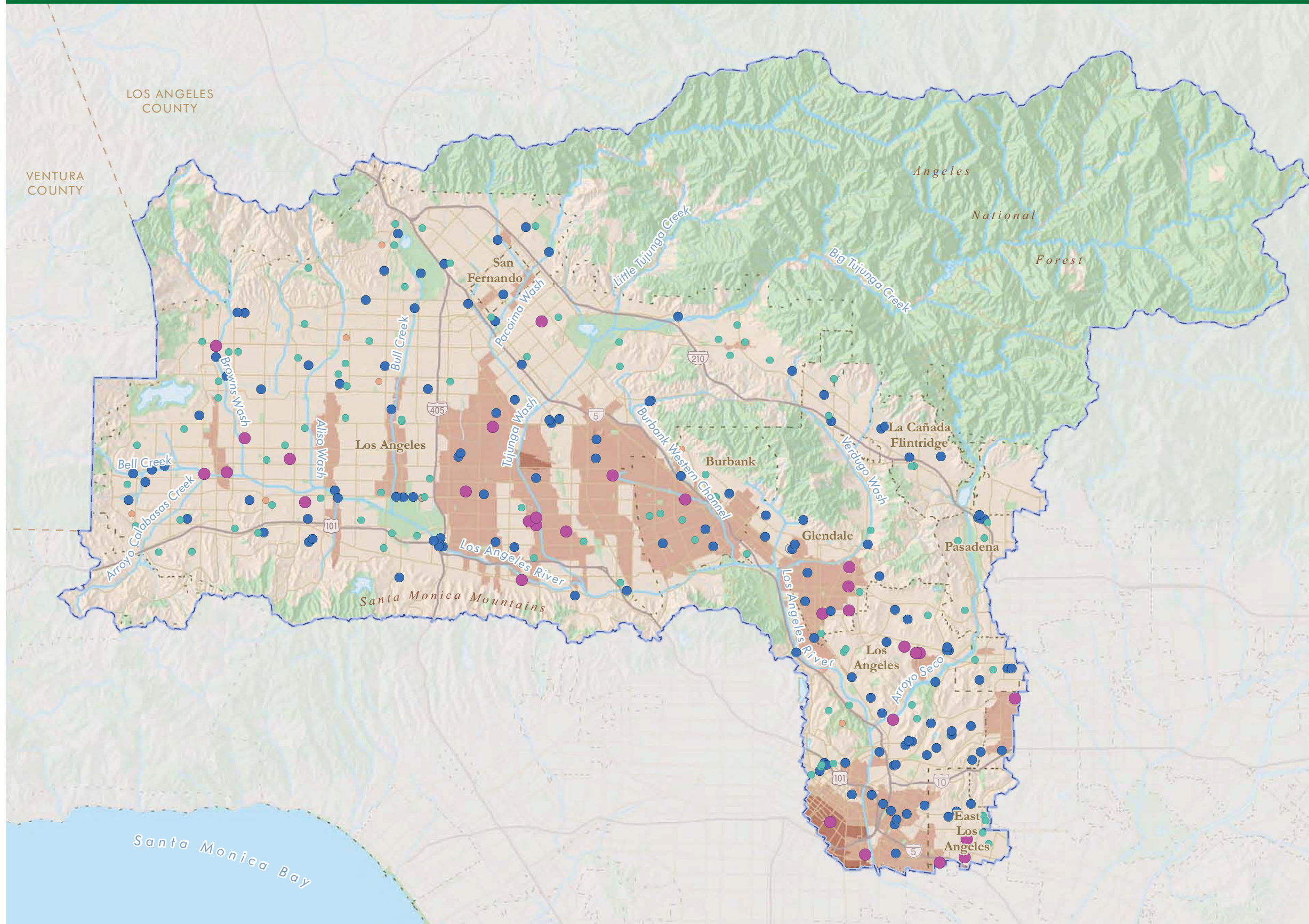




# GREEN SOLUTION PROJECT: Upper Los Angeles River Watershed, Phase III

## Prioritized Opportunity Public Parcels



### PRIORITIZED OPPORTUNITY PUBLIC PARCELS INTEGRATING WATER QUALITY, COMMUNITY & CONSERVATION NEEDS

Runoff quantity and pollutant load, community needs and open space/habitat proximity were integrated to evaluate, rank and prioritize opportunity public parcels for Green Solution project implementation. Parcels shown are elementary, middle and high schools, colleges and vacant lands that meet size, slope and storm drain proximity criteria.

Parcel Score	# Parcels
High (Purple)	5
4 (Blue)	137
3 (Green)	93
Low 1-2 (Orange)	8

### WATER FEATURES

- Watershed Boundary
- River, Stream or Channel
- Lake or Reservoir

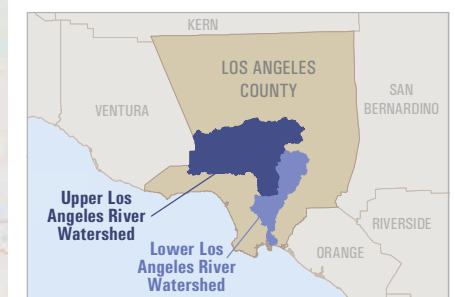
### POLLUTED RUNOFF CLEANUP PRIORITY Score, Catchment Prioritization Index (CPI)

Very High (Dark Brown)	5
High (Medium Brown)	4
Low to Moderate (Light Brown)	1-3

CPI is an indicator of polluted runoff treatment need. CPI scores are based on land use, estimated runoff pollutant concentrations and average precipitation.

### ADMINISTRATIVE FEATURES

- Highway
- Major Road
- City Boundary
- Park / Open Space



**PSOMAS**



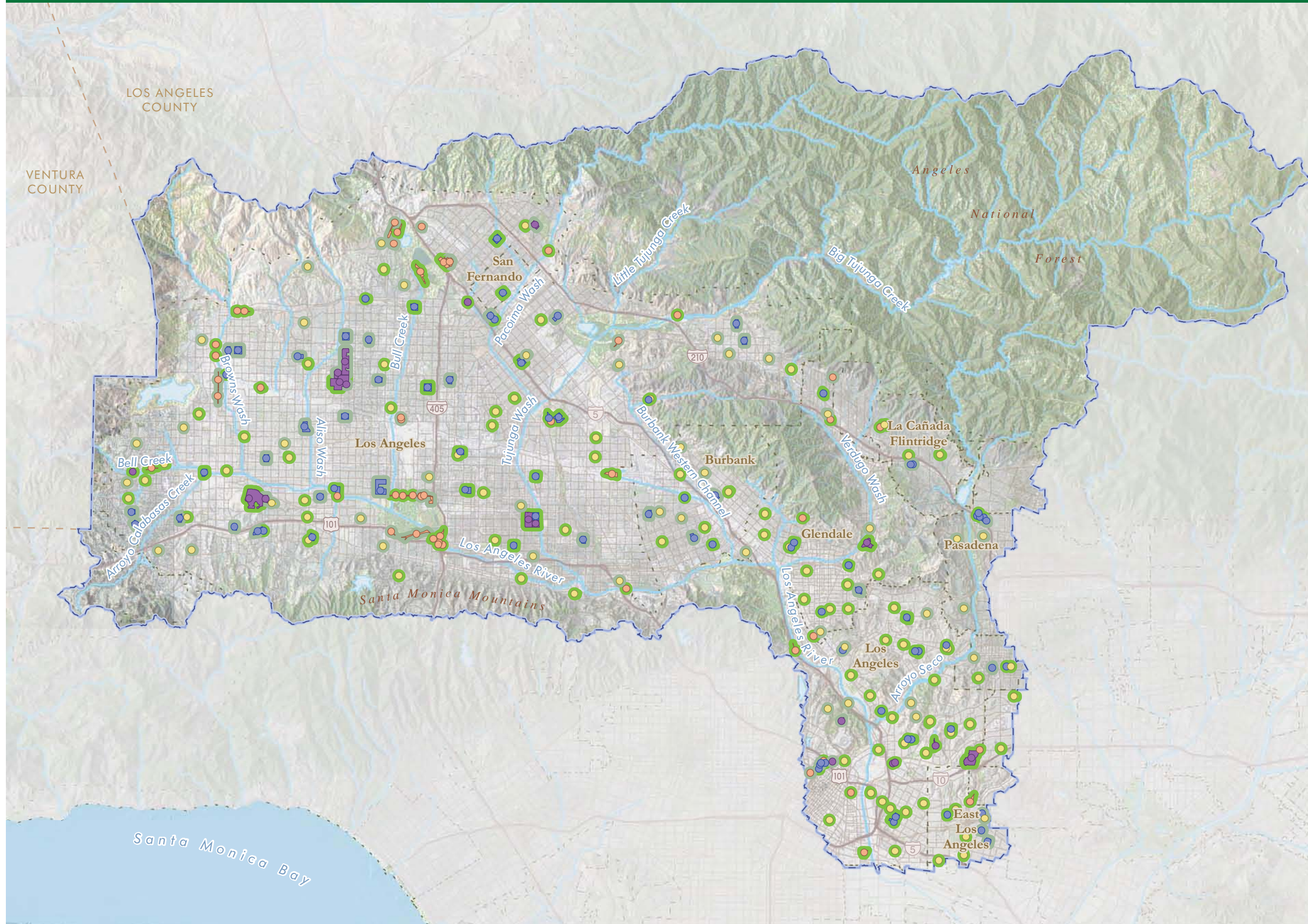
Map created by GreenInfo Network  
www.greeninfo.org, March 2013





# GREEN SOLUTION PROJECT: Upper Los Angeles River Watershed, Phase III

## Prioritized Opportunity Public Parcels by Land Use



### PRIORITIZED OPPORTUNITY PUBLIC PARCELS INTEGRATING WATER QUALITY, COMMUNITY & CONSERVATION NEEDS

Runoff quantity and pollutant load, community needs and open space/habitat proximity were integrated to evaluate, rank and prioritize opportunity public parcels for Green Solution project implementation. Parcels shown are elementary, middle/ high schools, colleges and vacant lands that meet size, slope and storm drain proximity criteria.

### OPPORTUNITY PUBLIC PARCELS BY LAND USE

- Elementary Schools
- Middle & High Schools
- Colleges
- Vacant

Note that parcels larger than 10 acres are shown actual size while smaller parcels are symbols. This causes them to appear to overlap in some areas.

### OPPORTUNITY PUBLIC PARCELS BY SCORE

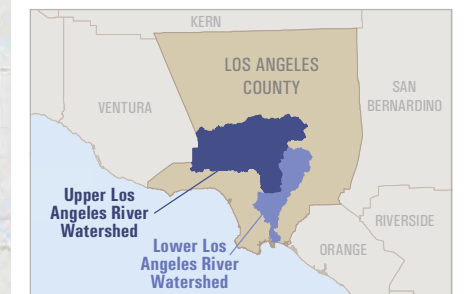
	Parcel Score	# Parcels
<span style="color: green;">■</span>	High 4-5	167
<span style="color: lightgreen;">■</span>	Low-Med 1-3	101

### WATER FEATURES

- Watershed Boundary
- ~ River, Stream or Channel
- ◊ Lake or Reservoir

### ADMINISTRATIVE FEATURES

- Highway
- Major Road
- ⋯ City Boundary
- Park / Open Space



**PSOMAS**



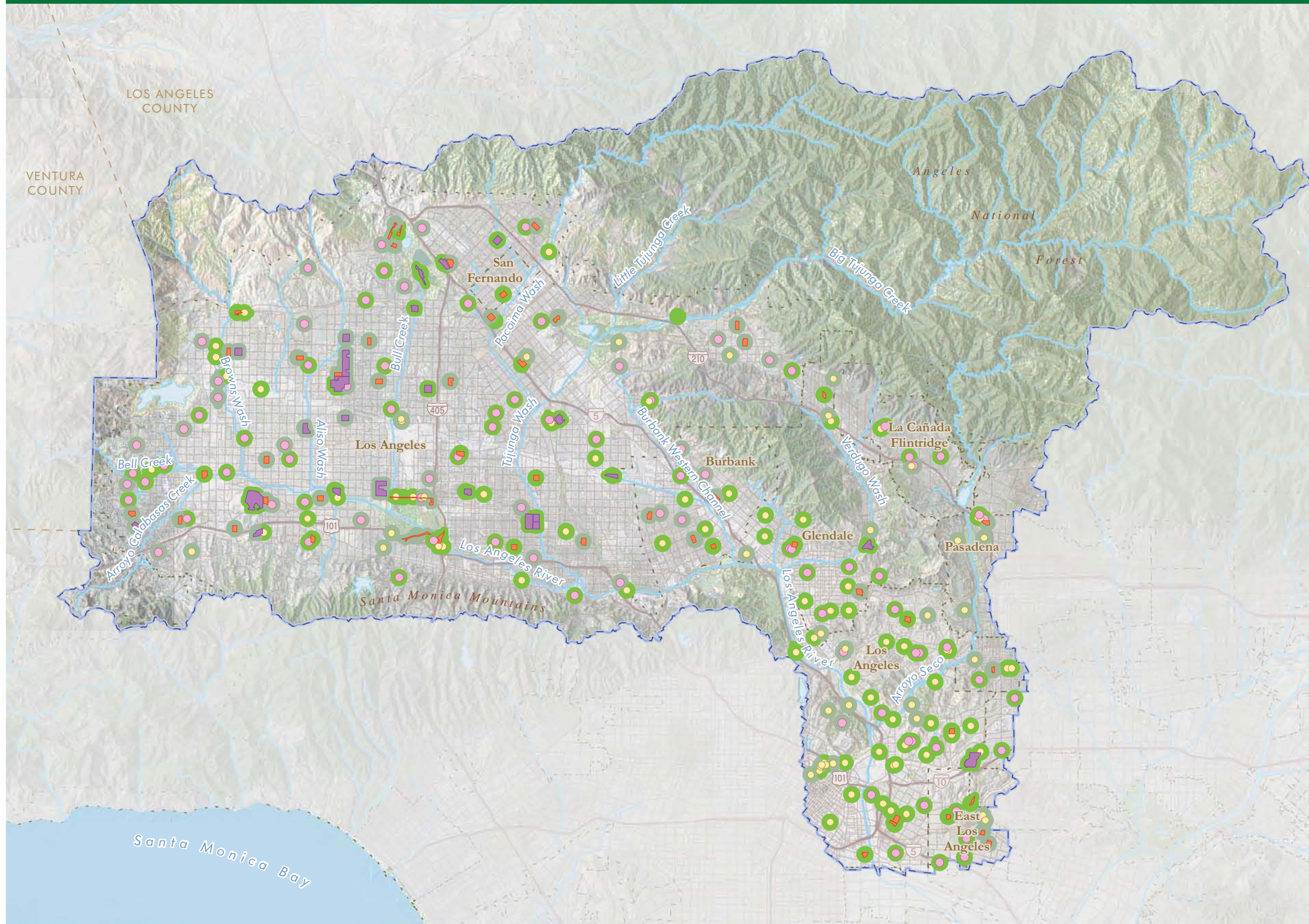
Map created by GreenInfo Network  
www.greeninfo.org, March 2013





# GREEN SOLUTION PROJECT: Upper Los Angeles River Watershed, Phase III

## Prioritized Opportunity Public Parcels by Size



### PRIORITIZED OPPORTUNITY PUBLIC PARCELS INTEGRATING WATER QUALITY, COMMUNITY & CONSERVATION NEEDS

Runoff quantity and pollutant load, community needs and open space/habitat proximity were integrated to evaluate, rank and prioritize opportunity public parcels for Green Solution project implementation. Parcels shown are elementary, middle/ high schools, colleges and vacant lands that meet size, slope and storm drain proximity criteria.

### OPPORTUNITY PUBLIC PARCELS BY SIZE

- Less than 5 acres
- 5 to 10 acres
- 10 to 25 acres
- 25 acres or la ger

Note that parcels la ger than 10 acres are shown actual size while smaller parcels are symbols. This causes them appear to overlap in some areas.

### OPPORTUNITY PUBLIC PARCELS BY SCORE

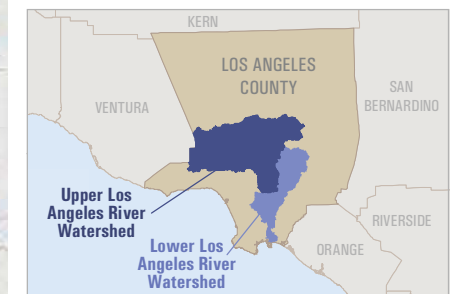
	Parcel Score	# Parcels
<span style="color: green;">■</span>	High 4-5	167
<span style="color: darkgreen;">■</span>	Low-Med 1-3	101

### WATER FEATURES

- Watershed Boundary
- ~ River, Stream or Channel
- Lake or Reservoir

### ADMINISTRATIVE FEATURES

- Highway
- Major Road
- - - City Boundary
- Park / Open Space



**PSOMAS**



Map created by GreenInfo Network  
www.greeninfo.org, March 2013

